

WALLSTREET-FORECASTER

WEEKLY REVIEW – March 20th, 2026



Don't miss next week's signals: Subscribe here: [Wallstreet Forecater](#)

Contents

Educational Resources	2
Rules.....	2
Previous Weekly Reviews	2
Subscriptions Plans	2
Algo Forecasts	3
Summary	4
Matrix Heat Map.....	4
Weekly Matrix.....	5
Matrix Summary	6
SPY Small Reversal Signals Magnitude (SSRSM)	6

Educational Resources

How space weather affects financial markets. Study done by the Federal Reserve Bank of Atlanta http://www.oss.cc/library/Solar_Activity_and_the_Stock_Market.asp

Lunar cycle effects in stock returns. Study by the University of Michigan Business School. <http://www.oss.cc/Library/SSRN-id281665.pdf>

Stock Commodities & Planetary Declination. How Mercury affects the price of Microsoft. <http://www.oss.cc/Library/Declinations.PDF>

Rules

1. All indicators are expected to manifest in a +/- 1-day window.
2. I don't try to forecast Mondays

Previous Weekly Reviews

Check the accuracy of these indicators in the past looking back on they performed in the past.

wallstreet-forecaster.com/weekly_review/past-reviews.asp

Subscriptions Plans

Not a subscriber or you want to upgrade your subscription.

To subscribe to a service, click here: Wallstreet Forecater

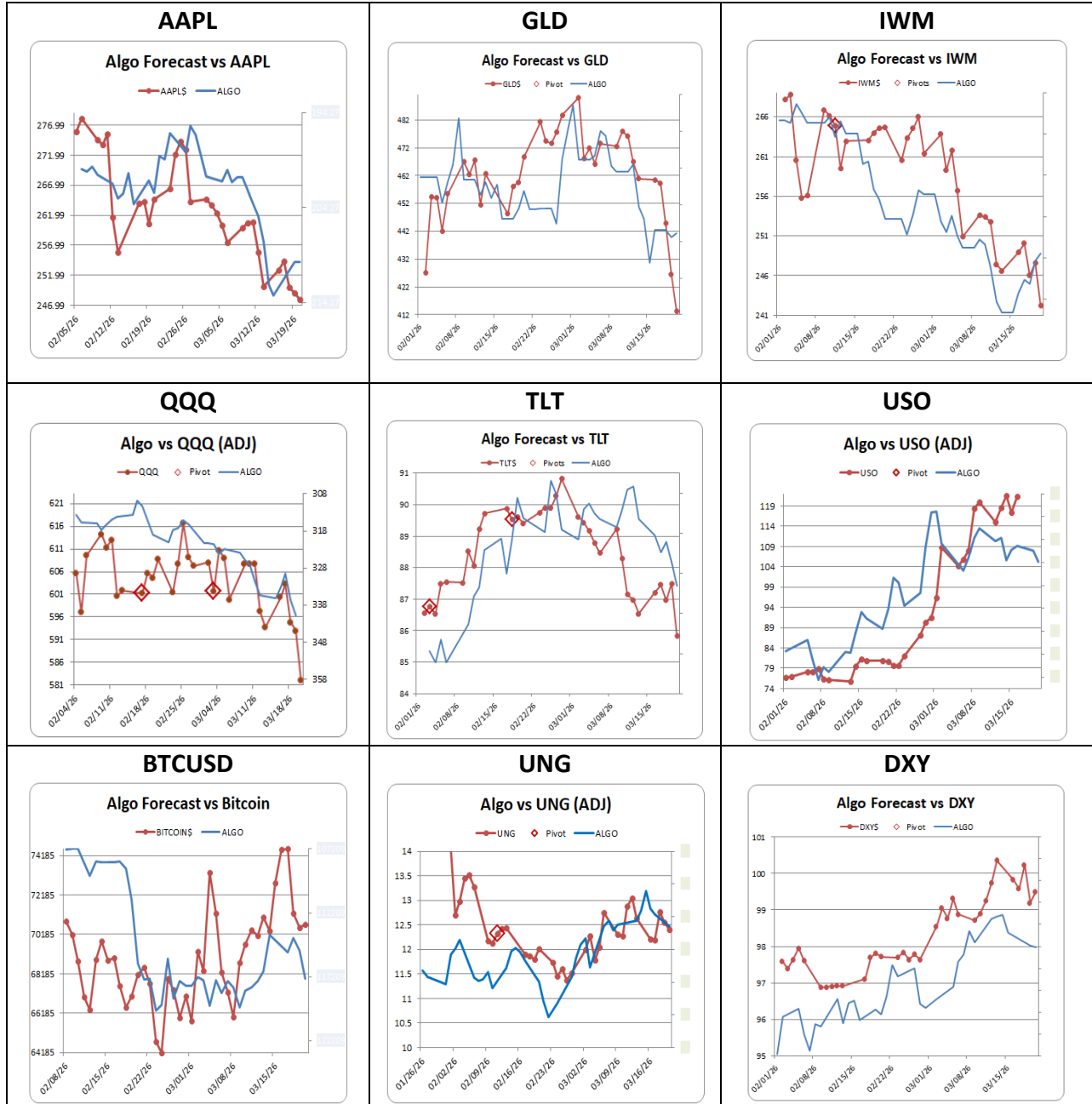
The image displays three subscription plan cards for Wallstreet Forecater. Each card is yellow with black text and features a 'Subscribe' button. The first card, 'NIGHTLY STATS', is free and includes features like 'Tomorrow's Outlook', 'Updates and Flashes', 'Some Indicators', 'Track closed trades', and 'Learn stuff you don't know'. The second card, 'NIGHTLY INDICATORS', costs \$35.00 monthly (or \$80.00 quarterly) and includes '2-week free trial', 'Latest indicator updates for tomorrow', 'Tradable signals', and 'Charts with trend reversal signals'. The third card, 'OPTION SIGNALS', costs \$89.95 monthly (or \$188.90 quarterly) and includes '2-week free trial', 'Option trade recommendations', 'Stock & ETF Options', and 'Nadex Binary Options'. All cards include a 'Past forecast' or 'Past trades' section and a 'Free Stuff' section.

Plan Name	Price	Key Features
NIGHTLY STATS	Free	Tomorrow's Outlook, Updates and Flashes, Some Indicators, Track closed trades, Learn stuff you don't know
NIGHTLY INDICATORS	\$35.00 MONTHLY	2-week free trial, Latest indicator updates for tomorrow, Tradable signals, Charts with trend reversal signals
OPTION SIGNALS	\$89.95 MONTHLY	2-week free trial, Option trade recommendations, Stock & ETF Options, Nadex Binary Options

Algo Forecasts

What are Algo Forecasts: http://oss.cc/education/algo_forecasts.pdf

The blue line forecasts direction, not price.



Summary

Weekly Matrix Indicators

- Heat Map correctly forecast a lower close on Friday
- The SPY Small Reversal Magnitude Signal correctly forecast a reversal on the 17th
- The Matrix Summary vs SPY correctly forecast the higher close on Tuesday, the lower closes on Wednesday and Thursday. Friday was slightly less bearish than Thursday but it was still a -4, so Friday could have gone either way.
- There were high volatility indicators on Sunday and Saturday. A 2 level may or may not produces a +/- 1% move in the stock indices but this time we did see such results on Monday and Friday.

Matrix Heat Map

The Matrix Heat Map, a simplified version of the Matrix, applies adjusted weightings to its values. Forecasts for Mondays are 50/50 so they are ignored.

Bearish to Bullish							
	-3	-2	-1	0	1	2	3
Matrix Heat Map							
Dates	03/15/26	03/16/26	03/17/26	03/18/26	03/19/26	03/20/26	03/21/26
Days	Sun	Mon	Tue	Wed	Thr	Fri	Sun
Bullish/Bearish							
Aspect Values						2	
Lunar Signs							
Lunar Aspects							
NOAA's A & (Kp)	-3	-2	-1	-1		-3	-3
Cycle L1							
Summary	-2	-2	-3	-3	-2	-4	-5
Stock Indices *		4.93%	1.74%	-7.39%	-0.64%	-8.23%	

* Stock Indices is the daily sum of the DJIA, SPY SPX IWM and QQQ.

Weekly Matrix

OSS Weekly Matrix

3/20/2026

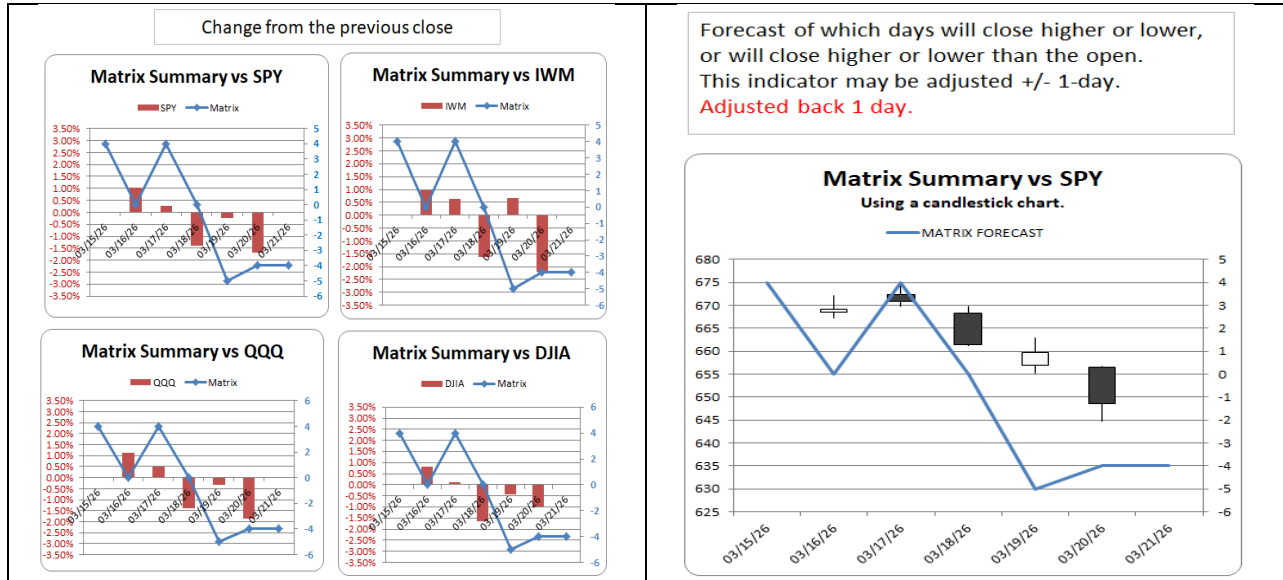
RED = Bearish GREEN = BULLISH BLUE = VOLATILITY Very Bearish Very Bullish Strong Volatility

INDICATORS	Sun 03/15/26	Mon 03/16/26	Tues 03/17/26	Wed 03/18/26	Thur 03/19/26	Fri 03/20/26	Sat 03/21/26
Volatility	2	0	1	0	0	0	2
Day of Month	1	1	-1	1	-1	-2	-1
Cycle L1	1	1	1	1	1	1	-1
Cycle L2	1	1	1	1	2	2	2
Cycle L3	1	1	1	1	1	1	1
Cycle L4	1	1	1	1	1	1	1
Cycle M1	1	1	1	1	1	1	2
Cycle M2	-1	-1	-1	-1	-1	-1	-1
Cycle M3	-1	-1	-1	-1	-1	-1	-1
Cycle V1	-1	-1	-1	-1	-1	-1	-1
Cycle V2	1	1	1	1	1	1	1
Cycle V3	1	1	1	1	1	1	1
Cycle M1	-1	-1	-1	-1	-1	-1	-1
Cycle M2	-1	-1	-1	-1	-1	-1	-1
Cycle M3	-1	-1	-1	-1	-1	-1	-1
Cycle LS	1	1	-1	-1	-1	-1	1
Adj Values							
Aspect Values			-1			2	
Bullish/Bearish	3	3	-2	1	0	1	1
Aspects	♂♂♂			♀♂♂ ♂♂♂			♂♂♂
Sun Moon Aspects				♂			
Lunar Sign	♊	♊	♋	♋	♌	♌	♍
NOAA's A & (Kp)	15 (4)	15 (4)	10 (3)	8 (3)	5 (2)	10 (3)	35 (5)
Retrogrades	♃	♃	♃	♃	♃	♃	
DJIA		0.83%	0.10%	-1.63%	-0.44%	-0.97%	-2.11%
SPY		1.02%	0.26%	-1.40%	-0.25%	-1.70%	-2.07%
SPX		1.01%	0.25%	-1.36%	-0.28%	-1.51%	-1.89%
IWM		0.95%	0.64%	-1.61%	0.65%	-2.20%	-1.79%
QQQ		1.12%	0.49%	-1.39%	-0.32%	-1.85%	-1.96%
DJT		0.69%	1.11%	-1.07%	0.49%	-0.54%	0.66%
GLD		-0.07%	-0.25%	-3.16%	-4.12%	-3.05%	-10.30%
SLV		0.74%	-2.12%	-4.13%	-4.40%	-6.38%	-15.41%
UUP		-0.57%	-0.20%	0.58%	-0.99%	0.36%	-0.75%
TLT		0.77%	0.29%	-0.57%	0.61%	-1.90%	-0.82%
USO		-4.05%	3.31%	2.35%	-3.54%	3.47%	1.28%

All indicators have a +/- 1-day window in which their energy should be seen.

Matrix Summary

Mondays are not included in the analysis. As usual, the indicators forecasted three days correctly.



SPY Small Reversal Signals Magnitude (SSRSM)

When the **dotted blue line** moves above **0.5**, there is a high probability of a 2 to 3 day reversals. The reversals could last longer but 2 to 3 days is the minimum to be expected.

