

WALLSTREET-FORECASTER

WEEKLY REVIEW – March 27th, 2026



Don't miss next week's signals: Subscribe here: [Wallstreet Forecater](#)

Contents

Educational Resources	2
Rules.....	2
Previous Weekly Reviews	2
Subscriptions Plans	2
Algo Forecasts	3
Summary	4
Matrix Heat Map.....	4
Option Trades	5
Weekly Matrix.....	6
Matrix Summary	7
SPY Small Reversal Signals Magnitude (SSRSM)	7

Educational Resources

How space weather affects financial markets. Study done by the Federal Reserve Bank of Atlanta http://www.oss.cc/library/Solar_Activity_and_the_Stock_Market.asp

Lunar cycle effects in stock returns. Study by the University of Michigan Business School. <http://www.oss.cc/Library/SSRN-id281665.pdf>

Stock Commodities & Planetary Declination. How Mercury affects the price of Microsoft. <http://www.oss.cc/Library/Declinations.PDF>

Rules

1. All indicators are expected to manifest in a +/- 1-day window.
2. I don't try to forecast Mondays

Previous Weekly Reviews

Check the accuracy of these indicators in the past looking back on they performed in the past.

wallstreet-forecaster.com/weekly_review/past-reviews.asp

Subscriptions Plans

Not a subscriber or you want to upgrade your subscription.

To subscribe to a service, click here: Wallstreet Forecater

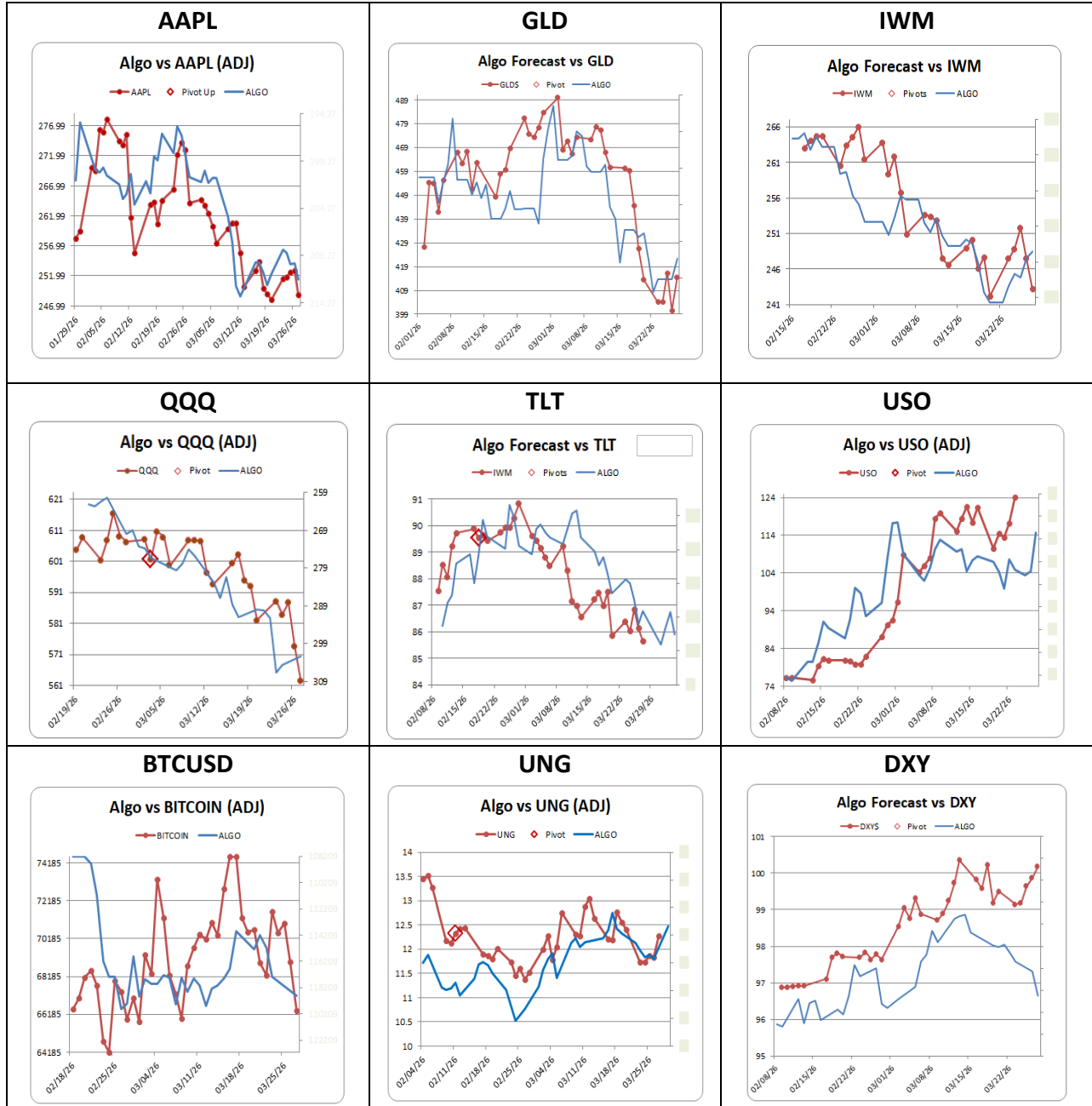
The image displays three subscription plans in a grid layout. Each plan is presented in a yellow box with a white background for the text. The first plan, 'NIGHTLY STATS', is free and includes features like 'Tomorrow's Outlook', 'Updates and Flashes', 'Some Indicators', 'Track closed trades', and 'Learn stuff you don't know'. The second plan, 'NIGHTLY INDICATORS', costs \$35.00 monthly (with a 2-week free trial) and includes 'Latest indicator updates for tomorrow', 'Tradable signals', and 'Charts with trend reversal signals'. The third plan, 'OPTION SIGNALS', costs \$89.95 monthly (with a 2-week free trial) and includes 'Option trade recommendations', 'Stock & ETF Options', and 'Nadex Binary Options'. All plans offer a 'Past forecast' or 'Past trades' feature. Payment options for the paid plans include Visa, Mastercard, American Express, and Discover. A 'Subscribe' button is provided for each plan, and a 'Signup' button is provided for the free plan.

Plan Name	Price	Free Trial	Key Features
NIGHTLY STATS	Free	None	Tomorrow's Outlook, Updates and Flashes, Some Indicators, Track closed trades, Learn stuff you don't know
NIGHTLY INDICATORS	\$ 35.00	2-week free trial	Latest indicator updates for tomorrow, Tradable signals, Charts with trend reversal signals
OPTION SIGNALS	\$ 89.95	2-week free trial	Option trade recommendations, Stock & ETF Options, Nadex Binary Options

Algo Forecasts

What are Algo Forecasts: http://oss.cc/education/algo_forecasts.pdf

The blue line forecasts direction and magnitude, not price.



Summary

Weekly Matrix Indicators

- The forecast of a reversal on Tuesday/Wednesday happened.
- Option trades produced a 571.92% profit. See individual trades in the **Option Trades** section.
- The Matrix Summary, which is usually right 75% of the time (predicting whether the indices will close higher or lower for Tuesday through Friday) sometimes is only 50% right. This week it was 100% wrong. This is the first time it was completely wrong. The Matrix Summary vs SPY, which can be adjusted +/- 1 day was 100% right by moving it backwards by one day.
- The Heat Map also had it worst week ever. The most bullish day closed lower and the most bearish day close higher. I blame Trump once again. All these indicators are based on natural cycles. Since Trump returned to office, his comments on tariffs and now the war, have superseded the natural cycles.

Matrix Heat Map

The Matrix Heat Map, a simplified version of the Matrix, applies adjusted weightings to its values. Forecasts for Mondays are 50/50 so they are ignored.

Bearish to Bullish							
	-3	-2	-1	0	1	2	3
Matrix Heat Map							
Dates	03/22/26	03/23/26	03/24/26	03/25/26	03/26/26	03/27/26	03/28/26
Days	Sun	Mon	Tue	Wed	Thr	Fri	Sun
Bullish/Bearish						2	
Aspect Values						2	
Lunar Signs							
Lunar Aspects			-1	-1			
NOAA's A & (Kp)	-3	-3		-3			
Cycle L1							
Summary	-2	0	-1	-4	4	8	0
Stock Indices *		6.92%	-1.03%	3.68%	-8.67%	-8.81%	

* Stock Indices is the daily sum of the DJIA, SPY SPX IWM and QQQ.

Option Trades

Total Profit/Loss: 571.92% -- Average Profit/Loss: 71%

Start Your **2-Week**
FREE Trial!

Ticker	Option	Entry Date	Entry Price	Exit Date	Exit Price	P/L
TGT	MAR27 117 CALLS	3/24/2026	\$1.11	3/25/2026	\$0.94	-15%
PFE	MAR27 26 CALLS	3/24/2026	\$1.08	3/25/2026	\$1.30	20%
MRNA	MAR27 53 CALLS	3/24/2026	\$0.94	3/25/2026	\$1.49	59%
GLD	MAR27 415 CALLS	3/24/2026	\$0.99	3/25/2026	\$6.19	525%
FSLR	MAR27 202.5 CALLS	3/24/2026	\$1.21	3/25/2026	\$1.06	-12%
CVS	MAR27 73 CALLS	3/24/2026	\$0.94	3/25/2026	\$0.39	-59%
CCJ	MAR27 112 CALLS	3/24/2026	\$1.27	3/25/2026	\$1.94	53%
MRK	MAR27 118 CALLS	3/23/2026	\$0.08	3/24/2026	\$1.61	101%

Weekly Matrix

OSS Weekly Matrix

3/27/2026

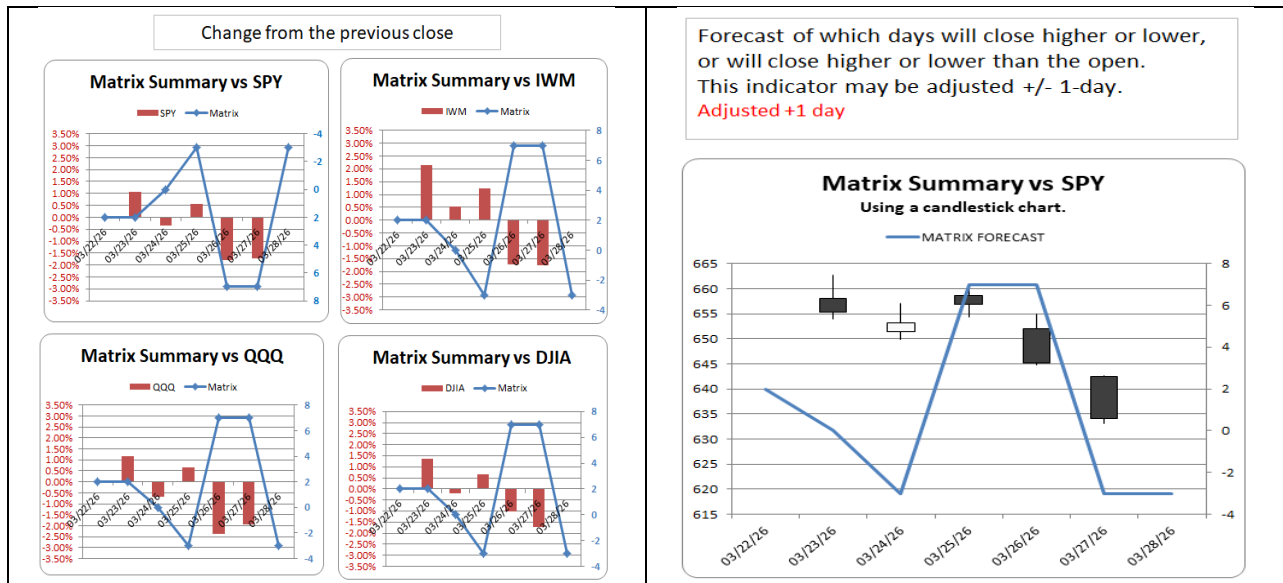
RED = Bearish GREEN = BULLISH BLUE = VOLATILITY Very Bearish Very Bullish Strong Volaitily

INDICATORS	Sun 03/22/26	Mon 03/23/26	Tues 03/24/26	Wed 03/25/26	Thur 03/26/26	Fri 03/27/26	Sat 03/28/26
Volatility	1	0	1	0	1	0	0
Day of Month	-1	-1	-1	-1	1	1	1
Cycle L1	-1	1	-1	-1	1	1	-1
Cycle L2	2	2	2	2	-1	-1	-1
Cycle L3	1	1	1	1	1	1	1
Cycle L4	1	1	1	1	1	1	1
Cycle M1	2	2	2	2	2	2	2
Cycle M2	-1	-1	-1	-1	-1	-1	-1
Cycle M3	-1	-1	-1	-1	-1	-1	-1
Cycle V1	-1	-1	-1	-1	-1	-1	-1
Cycle V2	1	1	1	1	1	1	1
Cycle V3	1	1	1	1	1	1	1
Cycle M1	-1	-1	-1	-1	-1	-1	-1
Cycle M2	-1	-1	-1	-1	-1	-1	-1
Cycle M3	-1	-1	-1	-1	-1	-1	-1
Cycle LS	1	1	1	1	1	1	-1
Adj Values							
Aspect Values						2	
Bullish/Bearish	1	3	1	1	2	4	-2
Aspects	☉♊♁			☉♊♁ ☉♋♁			♁♋♁
Sun Moon Aspects		*		□		△	
Lunar Sign	♈	♈	♈	♈	♏	♏	♏
NOAA's A & (Kp)	24 (5)	34 (6)	14 (3)	12 (3)	12 (3)	8 (3)	8 (3)
Retrogrades							
DJIA		1.38%	-0.18%	0.66%	-1.01%	-1.73%	-0.90%
SPY		1.05%	-0.34%	0.55%	-1.79%	-1.71%	-2.24%
SPX		1.15%	-0.37%	0.59%	-1.74%	-1.67%	-2.12%
IWM		2.16%	0.54%	1.22%	-1.74%	-1.75%	0.38%
QQQ		1.18%	-0.68%	0.66%	-2.39%	-1.95%	-3.35%
DJT		1.33%	1.34%	0.61%	-0.39%	-1.06%	1.82%
GLD		-2.26%	0.02%	3.00%	-3.76%	3.49%	0.30%
SLV		1.54%	0.77%	3.61%	-6.81%	4.39%	3.17%
UUP		-0.45%	0.31%	0.18%	0.38%	0.11%	0.58%
TLT		0.64%	-0.43%	0.95%	-0.83%	-0.55%	-0.22%
USO		-8.98%	3.60%	-1.03%	3.41%	5.92%	2.28%

All indicators have a +/- 1-day window in which their energy should be seen.

Matrix Summary

Mondays are not included in the analysis. As usual, the indicators forecasted three days correctly.



SPY Small Reversal Signals Magnitude (SSRSM)

When the **dotted blue line** moves above **0.5**, there is a high probability of a 2 to 3 day reversals. The reversals could last longer but 2 to 3 days is the minimum to be expected.

